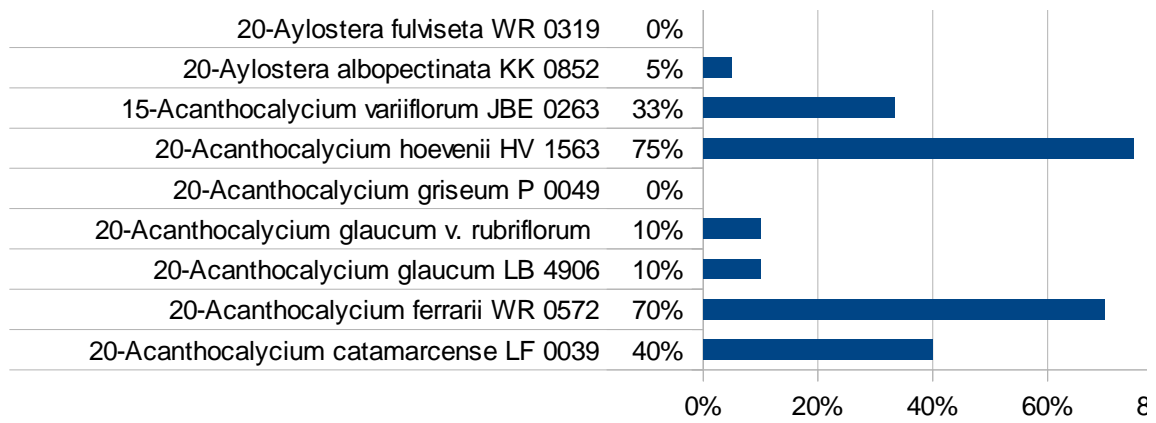


Phase 2

20-Pyrrhocactus vertongenii HV 0355	80%	
20-Pyrrhocactus meglolii HV 0528	5%	
15-Pyrrhocactus andreaeanus LF 0016	107%	
20-Lobivia tegeleriana v. incuiensis WR 0443	0%	
20-Lobivia tegeleriana v. albiflora KK 1154	0%	
20-Lobivia schieliana L 0154A	15%	
20-Lobivia pugionacantha v. rossii WR 0070	30%	
20-Lobivia pugionacantha v. cornuta JK 0382	5%	
20-Lobivia pugionacantha	0%	
20-Lobivia maximiliana v. corbula KK 1542	30%	
20-Lobivia maximiliana v. charazanensis WR 0206	5%	
20-Lobivia marsoneri v. rubescens MN 0027	0%	
20-Lobivia marsoneri v. iridescens LF 0052	20%	
20-Lobivia lateritia LB 5069	10%	
20-Lobivia kupperiana v. rubriflora JK 0381	5%	
20-Lobivia kupperiana JK 0353	50%	
20-Lobivia jajoiana v. nigristoma DJF 0290	0%	
20-Lobivia horrida FR 0974	10%	
20-Lobivia haematantha v. viridis ES 0101	0%	
20-Lobivia haematantha v. rebutioides LF 0047	10%	
20-Lobivia haematantha v. kuehnrichii WR 0013	10%	
20-Lobivia haematantha v. densispina MN 0039	35%	
20-Lobivia haematantha v. chorillosensis MN 0114	25%	
20-Lobivia haematantha L 0459	0%	
20-Lobivia ferox v. longispina JK 0249	5%	
20-Lobivia cinnabarina v. walterspielii JK 0432	0%	
20-Lobivia cinnabarina v. leucosyphus KK 0799	5%	
20-Lobivia chrysochete v. subtilis MN 0133	0%	
20-Lobivia chrysochete v. minutiflora VZ 0624	0%	
20-Lobivia chrysochete v. hystrix JK 0241	0%	
20-Lobivia chrysochete WR 0173	0%	
15-Lobivia chrysantha v. hypocyrta WR 0161	67%	
20-Lobivia chrysantha fa. hossei	70%	
20-Lobivia chrysantha LF 0059	35%	
20-Lobivia cardenasiana v. rubriflora WR 0498a	10%	
20-Lobivia acanthoplegma v. pilosa WR 0667	25%	
20-Lobivia acanthoplegma v. patula RCB 0309	15%	
20-Ferocactus fordii DJF 0007	0%	
20-Echinopsis aurea v. dobeana HV 0608	20%	
20-Aylostera robustispina RH 0265	0%	

Phase 2





## Phase 2

